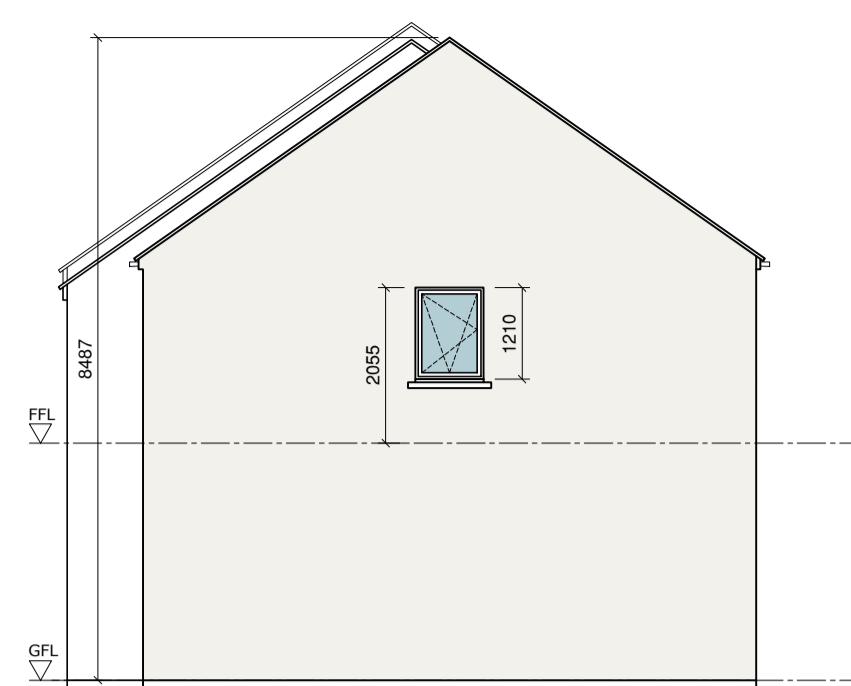




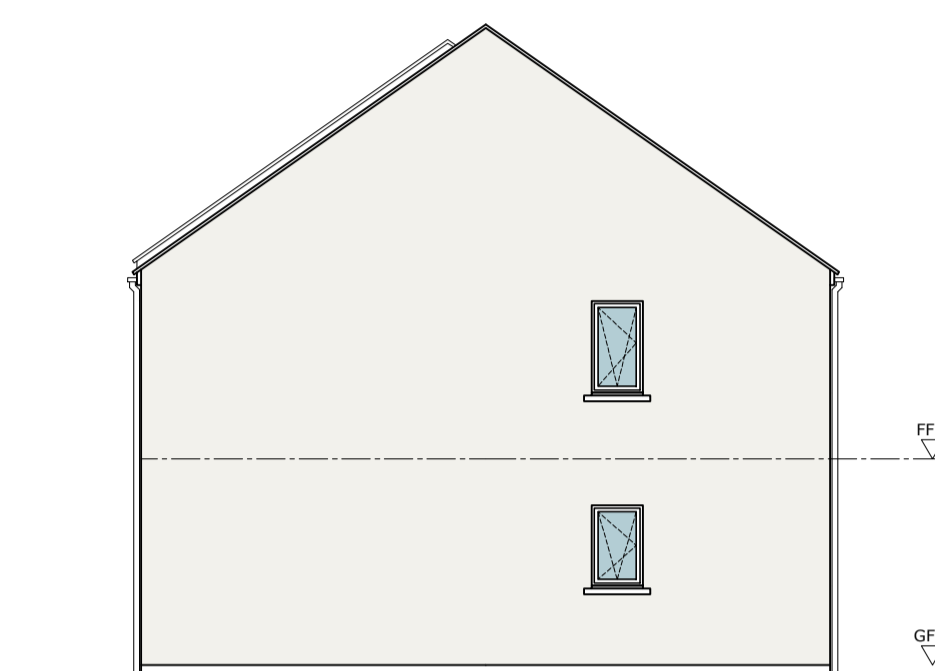
Front Elevation



Rear Elevation



Side Elevation



Side Elevation

## House Type 6

Quality Housing for Sustainable Communities Standards

3 Bedroom / 5 Person House (2 Storey) Areas:					
	Target Gross Floor Areas (m <sup>2</sup> )	Min-Main Living Room (m <sup>2</sup> )	Aggregate Living Area (m <sup>2</sup> )	Aggregate Bedroom Area (m <sup>2</sup> )	Storage (m <sup>2</sup> )
Required	92 sqm	13 sqm	34 sqm	32 sqm	5 sqm
Provided	96.7sqm	14.3 sqm	35sqm	32.6 sqm	5 sqm

3 Bedroom / 5 Person (2 Storey) Widths:

	Single Bedroom (m)	Double Bedroom (m)	Living Rm [1 Bed] (m)	Living Rm [2 Bed] (m)	Living Rm [3 Bed] (m)
Required	2.1m	2.8m	3.3m	3.6m	3.8m
Provided	2.85 m	2.9 m	-	-	3.8 m

## House Type 25

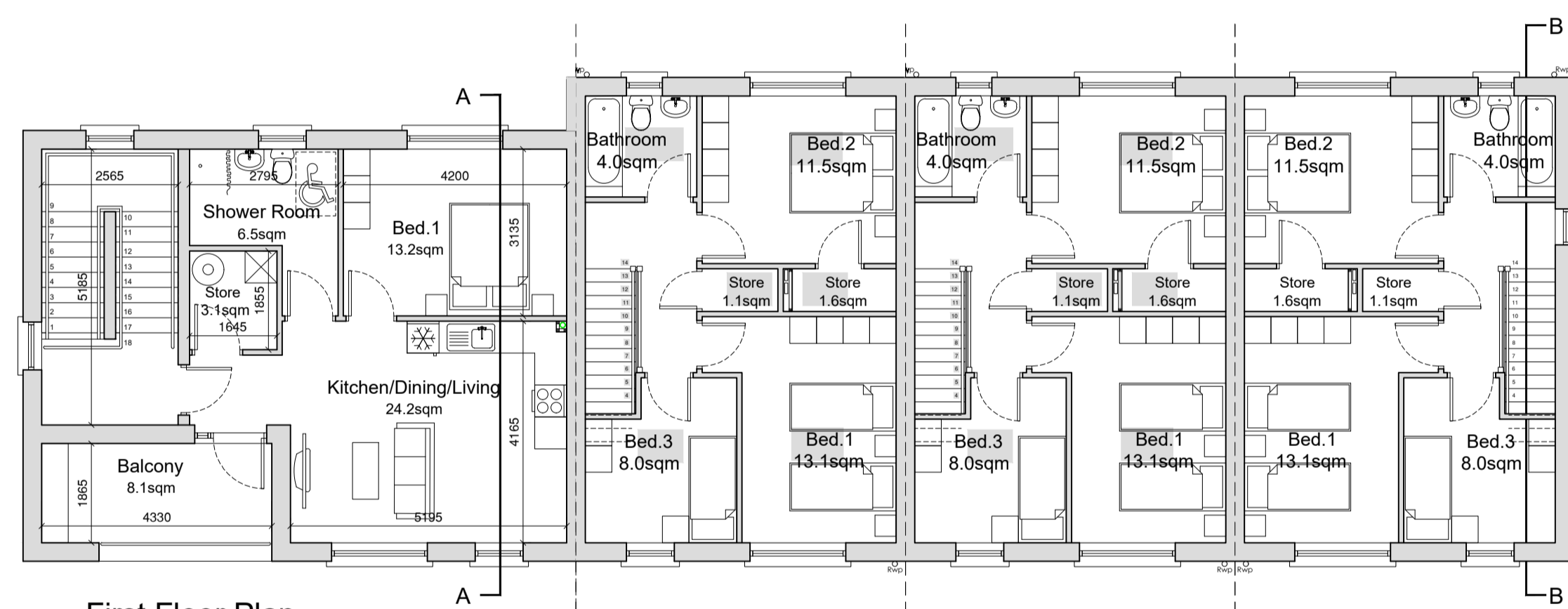
Quality Housing for Sustainable Communities Standards

1 Bedroom / 2 Person (apt) Areas:				
	Target Gross Floor Areas (m <sup>2</sup> )	Aggregate Living Area (m <sup>2</sup> )	Aggregate Bedroom Area (m <sup>2</sup> )	Storage (m <sup>2</sup> )
Required	45 sqm	23sqm	11.4 sqm	3 sqm
Provided	GF 48.3sqm FF 48.3sqm*	GF 24.2sqm FF 24.2sqm	GF 13.2sqm FF 13.2sqm	GF 3.1sqm FF 5.8sqm

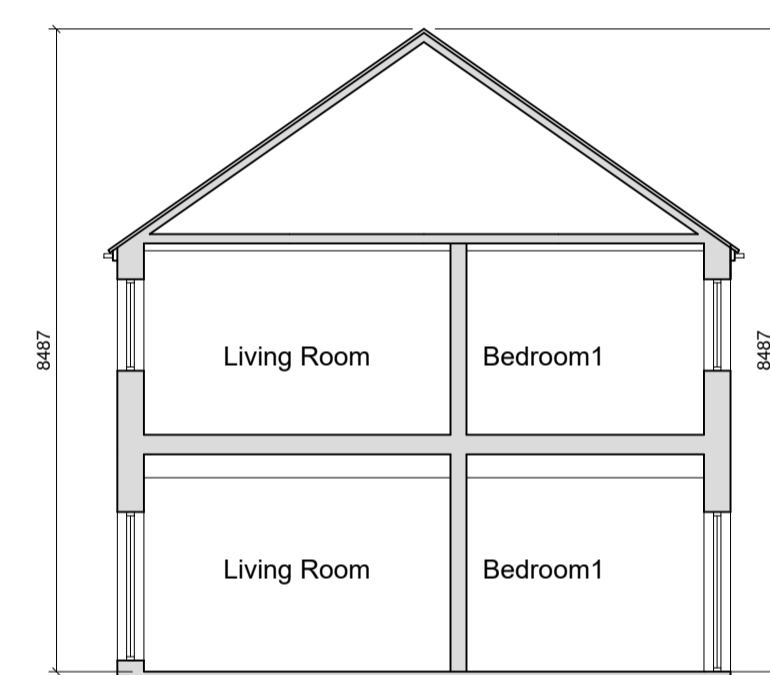
2 Bedroom / 3 Person (apt) Widths:

	Single Bedroom (m)	Double Bedroom (m)	Living Rm [1 Bed] (m)	Living Rm [2 Bed] (m)	Living Rm [3 Bed] (m)
Required	2.1m	2.8m	3.3m	3.6m	3.8m
Provided	-	GF 3.15sqm FF 3.15sqm	GF 4.2sqm FF 4.2sqm	-	-

\*Excluding Stairs

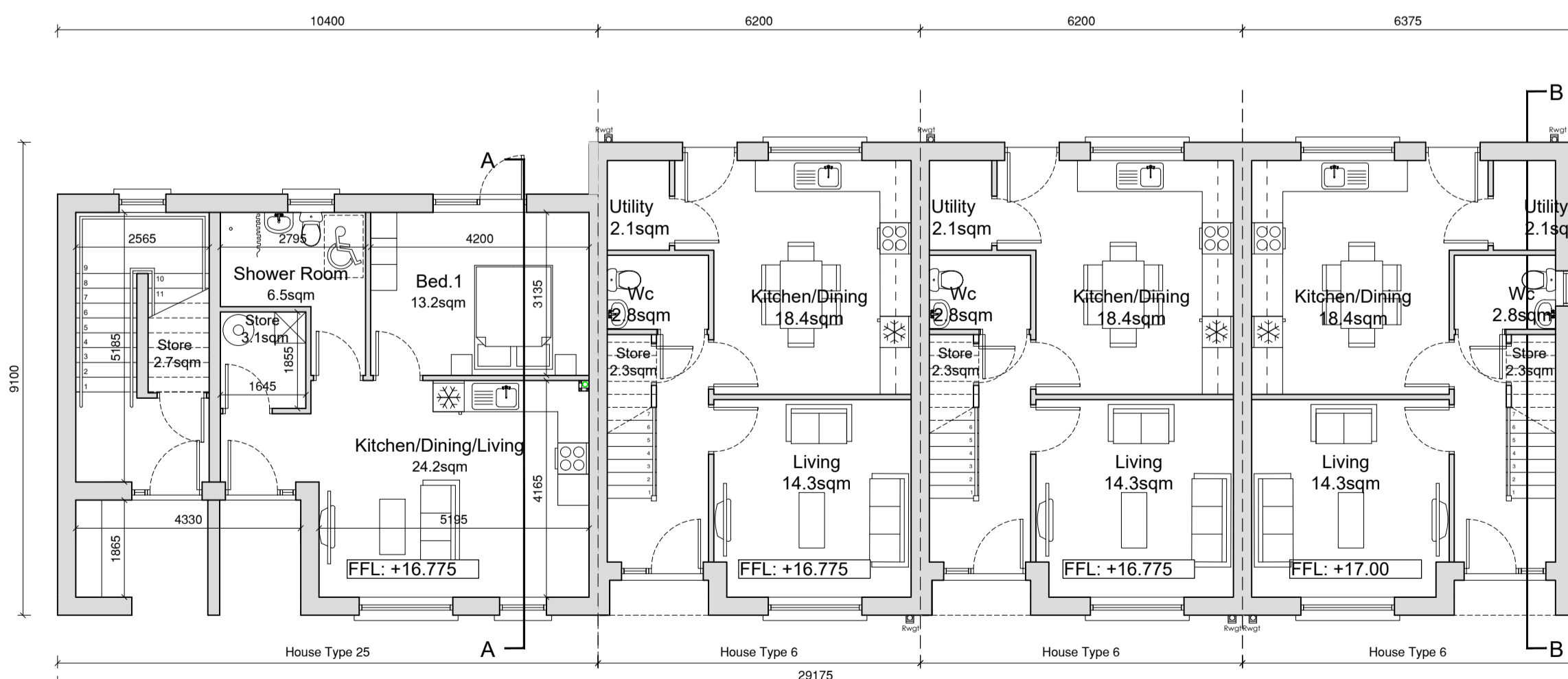


First Floor Plan

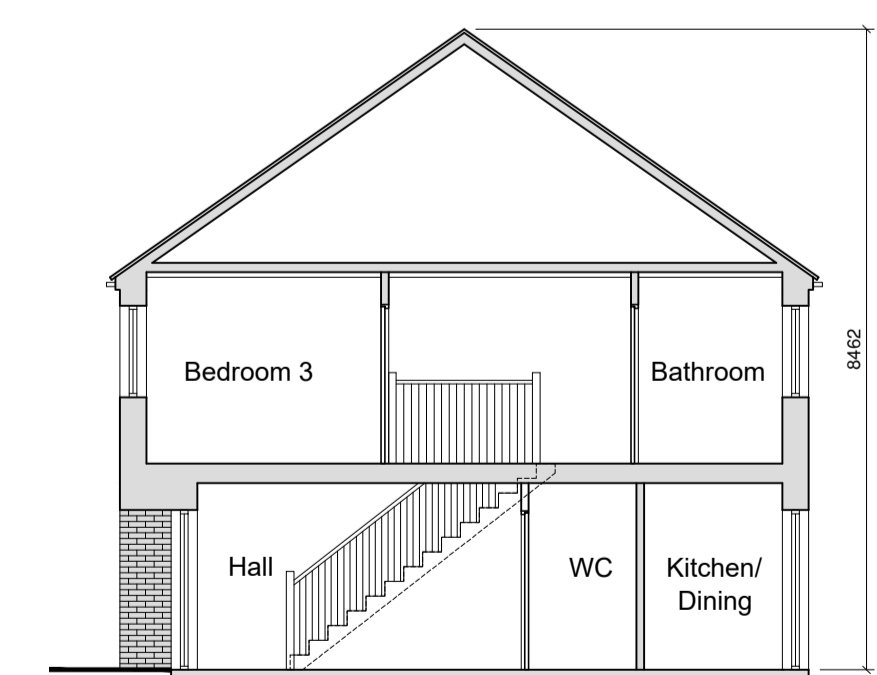


Section A-A

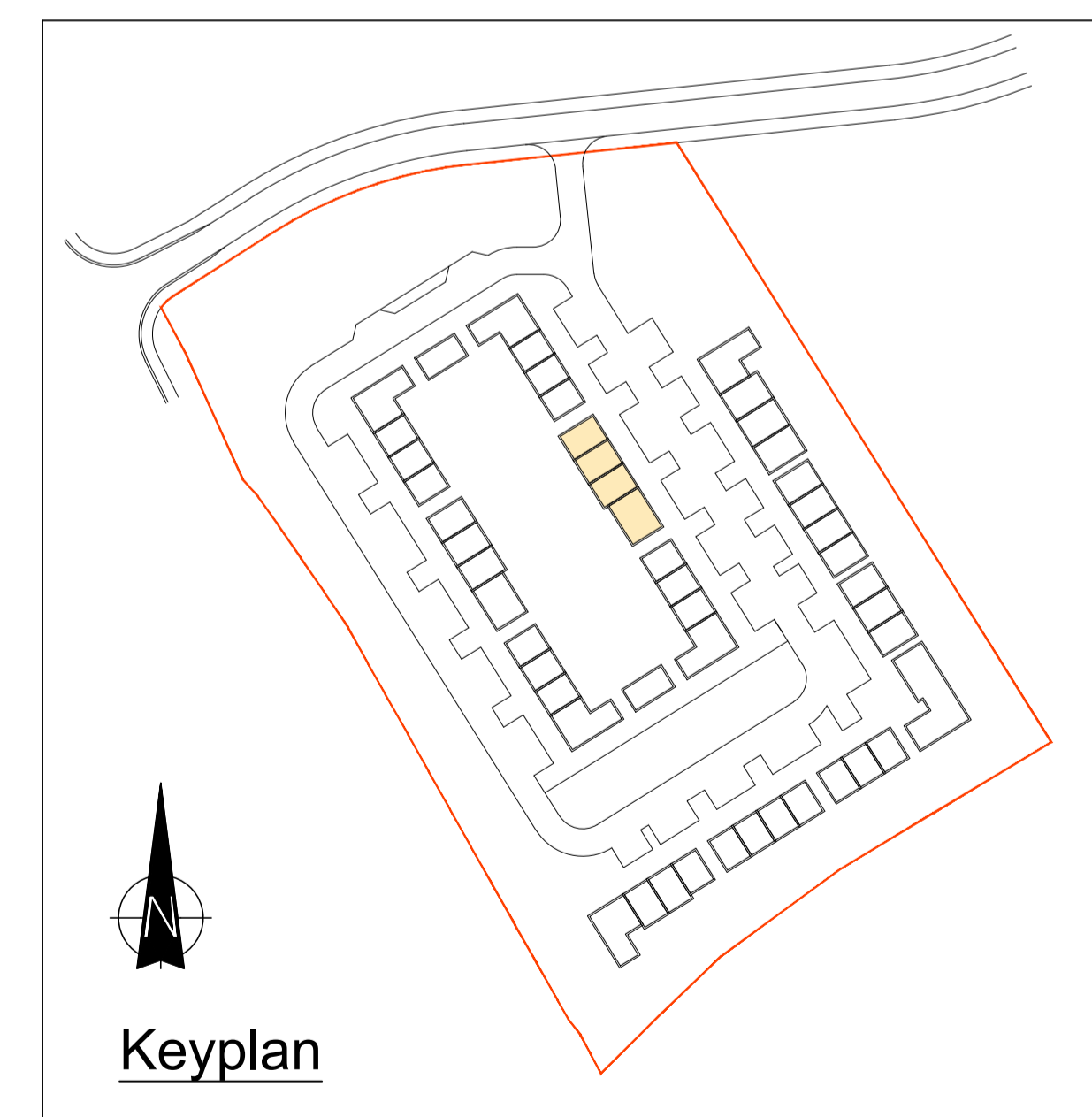
External Finishes Schedule	
Roof:	Blue/Black Fibre cement Slate
Walls:	White External Render - Smooth/dashed Brick detail at Entrances
Windows & Doors:	Grey AluClad
Rain Water Goods:	Black uPVC



Ground Floor Plan



Section B-B



Keyplan

NOTES

REVISION	DATE	DESCRIPTION	BY
-	-	-	-
-	-	-	-
-	-	-	-
-	-	-	-
-	-	-	-
-	-	-	-